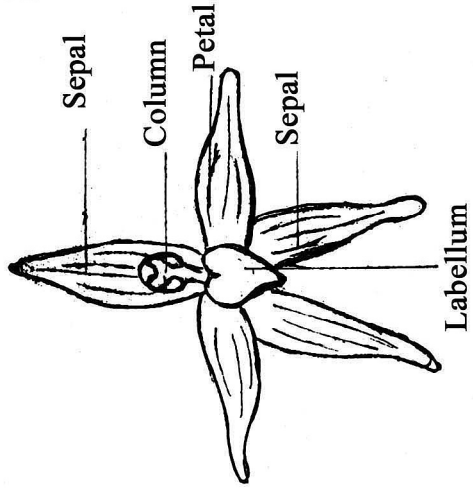


## STRUCTURE OF AN ORCHID



An orchid consists of:

- 1 Labellum
- 1 Column
- 1 Dorsal Sepal
- 2 Lateral Sepals
- 2 Petals

Dorsal means back - think of the dorsal fin of the fish. It runs along the fish's backbone.

Which sepal would be the dorsal sepal?

Lateral means side. Where would you find the lateral sepals?

This orchid is called a *Glossodia major*.

*Glossodia* mean tongue. Does the labellum look like a tongue?

Sepals surround the petals when the flower is in bud. So which will be in front when the flower is open - sepals or petals?

### Activity

1. Colour the pieces purple, except the upper half of the labellum.
2. Cut out and make your own orchid.
3. Put it on a stem.

